

 PAVILION  
*Global*<sup>TM</sup>



OUTDOOR FURNITURE SELECTIONS FROM AROUND THE WORLD

# TABLE OF CONTENTS

Anibal	2/30
Brafta	3/26
Coast	4/30
Euro	5/30
Imperial	6/29
Marquis	7/27
Madison	8/26
Miha	10/29
Nevada	11/28
North	12/28
Omega	13/30
Pacific	14/27
Plank	16/29
Shade	17/30
Strips	18/28
Sun	20/29
Tanit	21/30
Topaz	22/29
Ria	24/27
Woven Selection	25
Warranty	31
Care and Maintenance	32



PAVILION GLOBAL IS A DIVISION OF PAVILION FURNITURE.

Pavilion Furniture provides the very highest quality extruded aluminum outdoor furniture custom manufactured to order in Miami, FL., United States of America and has been doing also for more than 50 years.

Pavilion Global provides outdoor furniture in a variety of quality materials which cannot practically be manufactured in the United States. These products are presented by our same informative Pavilion sales representatives and backed up by Pavilion Customer Service. Pavilion seat cushions and fabrics including COM may be ordered on all Pavilion Global items.

Consider Pavilion and Pavilion Global for all of your outdoor furniture requirements when quality, value and service are your primary concerns.

**ABOUT:**

Pavilion Global carefully selects outdoor furniture products from around the world representing the finest quality and design. The attached collections are handcrafted in Indonesia using the finest weaving materials such as Viro (tm) , Raucord by Rahau (tm), Ecolene (r), Polystrand ( r) , and Batyline (r) to produce high quality, lightweight and weather resistant furniture and accessories. These synthetic fibers enable a myriad of designs while providing chemical and UV resistance. This weather proof, high-tensile strength furniture is safe for the environment and 100% recyclable.

**FLEXIBILITY OF PURCHASE:**

All of the styles shown are in-stock in the weave color and finish indicated and ship FOB Miami.

You may select cushions from the fabrics as indicated which are also in stock and ship with the furniture in TWO to THREE weeks.

You may select any Pavilion fabric or COM on in-stock frames for shipment in THREE to FOUR weeks

You may also customize with any of the finishes or weaves on most pieces not inventoried for shipment in 14-16 weeks.

For large orders, we will gladly quote container pricing at additional savings. Container shipments also require 14-16 weeks lead time. Consult your Pavilion sales representative for pricing.



# Anibal



A

**In stock**  
Weave: JB Chocolate  
Fabric: Canvas 5453



B

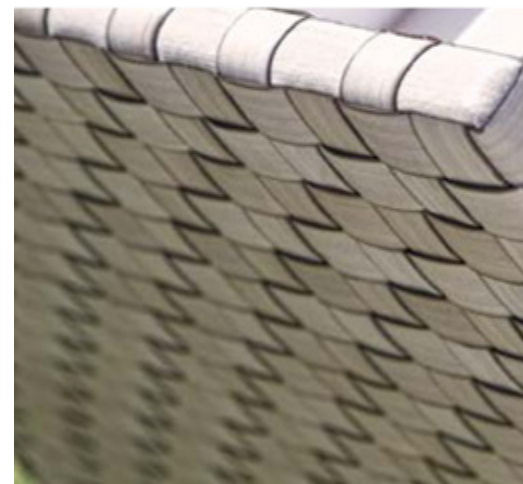
**A 22880 BED**  
79 x 79 x 10 inches.  
**22881 ROOF WITH CANOPY**  
85 x 79 x 87 inches.  
Shown:  
Weave: JB Chocolate  
Cushion: Canvas 5453

**B 22880 BED**  
79 x 79 x 10 inches.  
**22884 SIDE TABLE**  
18 x 18 x 20 inches.  
Shown:  
Weave: JB Chocolate  
Cushion: Canvas 5453

# Brafta



A



B

**In stock**  
Weave: Seashell  
Fabric: Canvas 5453  
Finish: White Matte Aluminum

**A 22921 LOVESEAT LEFT END**  
75 x 37 x 28 inches.  
**22923 CORNER PART**  
37 x 37 x 28 inches.  
**22922 LOVESEAT RIGHT END**  
75 x 37 x 28 inches.  
**22924 RECTANGULAR COFFEE TABLE**  
47 x 24 x 17 inches.  
Shown:  
Weave: Seashell  
Finish: White Matte Aluminum  
Cushion: Canvas 5453

**B 22931 LOUNGE CHAIR**  
30 x 37 x 28 inches.  
**22925 SIDE TABLE**  
20 x 20 x 22 inches.  
Shown:  
Weave: Seashell  
Finish: White Matte Aluminum  
Cushion: Canvas 5453

# Coast

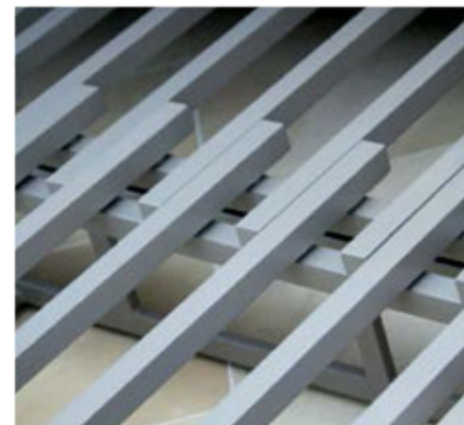


A

# Euro



A



**In stock**  
 Weave: Silver Walnut  
 Fabric: Taupe 5461  
 Shade: Batyline 5112

**A 22891 DAYBED**  
 79 x 78 x 80 inches. OPEN  
 79 x 45 x 80 inches. CLOSED  
**22884 SIDE TABLE**  
 18 x 18 x 20 inches.  
 Shown:  
 Finish: Silver Walnut  
 Fabric: Taupe 5461  
 Sling: Batyline 5112

**In stock**  
 Weave: JB Chocolate  
 Metallic Wash  
 Silver Walnut  
 Fabric: Canvas 5453

**A 22709 STACKABLE BARSTOOL**  
 17 x 21 x 43 inches.  
**22713 BAR**  
 51 x 18 x 42 inches.  
 Shown:  
 Weave: JB Chocolate  
 Fabric: Canvas 5453

# Imperial



A

**In stock**

Weave: JB Chocolate  
Metallic Wash  
Fabric: Canvas 5453

**A 22852 LOUNGER**  
30 x 79 x 21 inches.  
**2935 AUXILIARY TABLE**  
16 x 16 x 20 inches.  
Shown:  
Weave: JB Chocolate  
Fabric: Canvas 5453

**B Shown:**  
Weave: Metallic Wash  
Fabric: Canvas 5453



B

# Marquis



A



B



C

**In stock**

Weave: JB Chocolate  
Fabric: Canvas 5453

**A 2301 DINING ARMCHAIR**  
22 x 23 x 34 inches.  
**2302 ROUND DINING TABLE**  
43 Ø x 29 inches.  
Shown:  
Weave: JB Chocolate  
Fabric: Canvas 5453

**B 2303 ROUND BISTRO TABLE**  
WITH UMBRELLA HOLE  
30 Ø x 29 inches.

**C 2302 ROUND DINING TABLE**  
WITH UMBRELLA HOLE  
43 Ø x 29 inches.  
**2301 DINING ARMCHAIR**  
22 x 23 x 34 inches.  
Shown:  
Weave: JB Chocolate  
Fabric: Canvas 5453

# Madison



A

**A 22143 SOFA**  
75 x 34 x 32 inches.  
**22142 LOVESEAT**  
52 x 34 x 32 inches.  
**22141 LOUNGE CHAIR**  
29 x 34 x 32 inches.  
**22144 COFFEE TABLE**  
48 x 24 x 16 inches.  
**22145 SIDE TABLE**  
20 x 20 x 21 inches.  
**22146 OTTOMAN**  
22 x 18 x 12 inches.  
Shown:  
Weave: Shimmer Viola  
Fabric: Canvas 5453

**B 22400 RECT. DINING TABLE**  
79 x 39 x 29 inches.  
**22444 DINING ARMCHAIR**  
25 x 26 x 36 inches.  
**22403 DINING CHAIR**  
20 x 26 x 36 inches.  
Shown:  
Weave: Shimmer Viola  
Fabric: Canvas 5453

**C 22401 SQUARE DINING TABLE**  
39 x 39 x 29 inches.  
**22403 DINING CHAIR**  
20 x 26 x 36 inches.  
Shown:  
Weave: Shimmer Viola  
Fabric: Canvas 5453

**In stock**  
Weave: Shimmer Viola  
Fabric: Canvas 5453



B



C

**D 22723 SQUARE BAR TABLE**  
31 x 31 x 42 inches.  
**22721 STACKABLE BARSTOOL**  
19 x 22 x 44 inches.  
Shown:  
Weave: Shimmer Viola  
Fabric: Canvas 5453

**E 22724 RECT. BAR TABLE**  
79 x 24 x 42 inches.  
**22722 STACKABLE BARSTOOL WITH ARMS**  
24 x 22 x 44 inches.  
Shown:  
Weave: Shimmer Viola  
Fabric: Canvas 5453

**F 22700 LOUNGER**  
30 x 79 x 12 inches.  
**22701 AUXILIARY TABLE**  
16 x 16 x 20 inches.  
Shown:  
Weave: Shimmer Viola  
Fabric: Canvas 5453



D



E



F

# Miha



A



**In stock**  
Weave: JB Chocolate  
Fabric: Canvas 5453

**A 2946 LOUNGER**  
30 x 79 x 10 inches.  
**2935 AUXILIARY TABLE**  
16 x 16 x 20 inches.  
Shown:  
Weave: JB Chocolate  
Fabric: Canvas 5453

# Nevada



A



B



C

**In stock**  
Weave: JB Chocolate  
Metallic Wash  
Silver Walnut  
Fabric: Canvas 5453

**A 2386 RECT. DINING TABLE**  
79 x 39 x 29 inches.  
**2382 DINING ARMCHAIR**  
23 x 25 x 36 inches.  
**2381 DINING CHAIR**  
20 x 25 x 36 inches.  
Shown:  
Weave: JB Chocolate  
Fabric: Canvas 5453

**B 2387 SQUARE DINING TABLE**  
39 x 39 x 29 inches.  
**2382 DINING ARMCHAIR**  
23 x 25 x 36 inches.  
Shown:  
Weave: JB Chocolate  
Fabric: Canvas 5453

**C 2386 RECT. DINING TABLE**  
79 x 39 x 29 inches.

# North



A



B



**In stock**  
Fabric: Batyline 5112

**A 22317 LOVESEAT LEFT END**  
64 x 37 x 30 inches.  
**22319 CORNER**  
37 x 37 x 30 inches.  
**22318 SOFA RIGHT END**  
92 x 37 x 30 inches.  
**22314 COFFEE TABLE**  
49 x 24 x 16 inches.  
**22315 SIDE TABLE**  
20 x 20 x 21 inches.  
Shown:  
Fabric: Batyline Natural 5112  
Self Welt / Quick Dry

**B 22311 LOUNGE CHAIR**  
36 x 38 x 30 inches.  
**22316 OTTOMAN**  
24 x 24 x 13 inches.  
Shown:  
Fabric: Batyline Natural 5112  
Self Welt / Quick Dry

# Omega



A

**In stock**  
Fabric: JB Chocolate  
Fabric: Canvas 5453

**A 2942 BAR**  
48 x 18 x 42 inches.  
**2943 BACKLESS BARSTOOL**  
15 x 15 x 29 inches.  
Shown:  
Weave: JB Chocolate  
Fabric: Canvas 5453





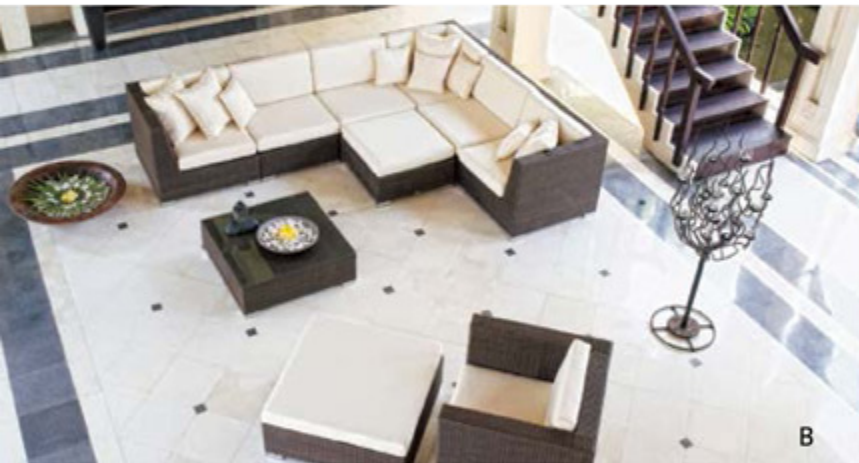
# Pacific



A



D



B



C



E



F



G

## In stock

Weave: JB Chocolate  
Silver Walnut  
Fabric: Canvas 5453

**A 2127 CURVED CORNER**  
66 x 66 x 31 inches.  
**2132 CENTER**  
30 x 36 x 31 inches.  
**2134 COFFEE TABLE**  
37 x 37 x 12 inches.  
Shown:  
Weave: JB Chocolate  
Fabric: Canvas 5453

**B 2131L/R LEFT OR RIGHT END**  
36 x 36 x 31 inches.  
**2132 CENTER**  
30 x 36 x 31 inches.  
**2133 CORNER**  
36 x 36 x 31 inches.  
**2137 SMALL OTTOMAN**  
30 x 30 x 12 inches.  
**2130 LOUNGE CHAIR**  
37 x 36 x 31 inches.  
**2139 LARGE OTTOMAN**  
37 x 37 x 12 inches.

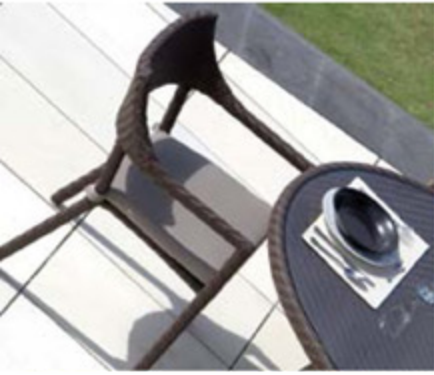
**C 2128 CHAISE RIGHT**  
79 x 47 x 31 inches.  
**2129 CHAISE LEFT**  
79 x 47 x 31 inches.  
**2135 SIDE TABLE**  
30 x 30 x 12 inches.  
Shown:  
Weave: JB Chocolate  
Fabric: Canvas 5453

**D 2374 LARGE SQUARE DINING TABLE**  
71 x 71 x 29 inches.  
**2370 DINING ARMCHAIR**  
26 x 26 x 30 inches.  
Shown:  
Weave: JB Chocolate  
Fabric: Canvas 5453

**E 2139 RACK**  
24 x 24 x 48 inches.  
Weave: JB Chocolate  
**F 2375 LARGE RECT. DINING TABLE**  
110 x 39 x 29 inches.  
**2370 DINING ARMCHAIR**  
26 x 26 x 30 inches.  
Shown:  
Weave: JB Chocolate  
Fabric: Canvas 5453

**G 2373 SQUARE DINING TABLE**  
39 x 39 x 29 inches.  
**2370 DINING ARMCHAIR**  
26 x 26 x 30 inches.  
Shown:  
Weave: JB Chocolate  
Fabric: Canvas 5453

# Plank



**In stock**  
Weave: JB Chocolate  
Fabric: Canvas 5453

**A 22690 OVAL DINING TABLE**  
81 x 55 x 29 inches.  
**22694 DINING ARMCHAIR**  
22 x 24 x 32 inches.  
**22691 ROUND DINING TABLE**  
47 Ø x 29 inches.  
Shown:  
Weave: JB Chocolate  
Fabric: Canvas 5453

# Shade



**In stock**  
Weave: Black Mushroom  
Fabric: Antique Beige 5422

**A 2973 SHADE**  
99 x 85 x 76 inches.  
Shown:  
Weave: Black Mushroom  
Fabric: Antique Beige 5422  
**B Shown:**  
Weave: Kubu Beta  
Fabric: Antique Beige 5422



# Strips



**In stock**

Weave: Silver Walnut

Fabric: Canvas 5453

**A 22913 SOFA**

89 x 36 x 33 inches.

**22911 LOUNGE CHAIR**

44 x 36 x 33 inches.

**22914 COFFEE TABLE**

41 Ø x 12 inches.

**22915 SIDE TABLE**

20 Ø x 22 inches.

Shown:

Weave: Silver Walnut

Finish: White Matte Aluminum

Fabric: Canvas 5453





A



**In stock**  
Weave: JB Chocolate  
Seashell  
Silver Walnut  
Fabric: Canvas 5453

**A 2932 SINGLE LOUNGER**  
30 x 79 x 11 inches.  
**2935 AUXILIARY TABLE**  
16 x 16 x 20 inches.  
Shown:  
Weave: JB Chocolate  
Fabric: Canvas 5453

**B** Shown:  
Weave: Seashell  
Fabric: Canvas 5453



A

**In stock**  
Weave: Metallic Wash  
Fabric: Taupe 5461  
Shades: Batyline 5112

**A 84806 DAYBED**  
88 x 88 x 102 inches.  
Shown:  
Weave: Metallic Wash  
Finish: Polished Aluminum  
Fabric: Taupe 5461  
Curtains: Batyline 5112

# Topaz



A



B



C



D

**In stock**

Weave: Black Mushroom  
Fabric: Canvas 5453

**A 2283 SOFA**

95 x 36 x 26 inches.

**2281 LOUNGE CHAIR**

42 x 36 x 26 inches.

**2284 COFFEE TABLE**

47 x 26 x 16 inches.

**2285 SIDE TABLE**

22 x 22 x 22 inches.

**2286 OTTOMAN**

26 x 23 x 10 inches.

Shown:  
Weave: Black Mushroom  
Fabric: Canvas 5453

**B 1940L/R LEFT OR RIGHT END**

38 x 39 x 26 inches.

**1940 CORNER**

38 x 39 x 26 inches.

**1941 CENTER**

30 x 39 x 26 inches.

**1943 MODULAR COFFEE TABLE/ OTTOMAN**

30 x 30 x 11 inches.

Shown:  
Weave: Black Mushroom  
Fabric: Canvas 5453

**C 29860 LOUNGER**

28 x 79 x 11 inches.

**29861 AUXILIARY TABLE**

16 x 16 x 20 inches.

Shown:  
Weave: Black Mushroom  
Fabric: Canvas 5453

**D 29861 AUXILIARY TABLE**

16 x 16 x 20 inches.

Shown:  
Weave: Black Mushroom



A



**In stock**  
Weave: JB Chocolate  
Fabric: Canvas 5453

**A 2423 DINING CHAIR**  
19 x 22 x 37 inches.  
Shown with:  
**2375 RECT. DINING TABLE**  
110 x 39 x 29 inches.  
Shown:  
Weave: JB Chocolate  
Fabric: Canvas 5453

# Woven Selections



Polyrod: 3mm  
Flat-Flat: 7mm  
10mm  
25mm

SUPER WHITE



Polypeel: 7mm

ARABICA



Polyrod: 3mm  
Flat-Flat: 10mm  
25mm  
(only for strips collection)  
50mm

SILVER WALNUT



Flat-Flat: 7mm  
10mm  
25mm

SEASHELL



Polypeel: 7mm

JB CHOCOLATE



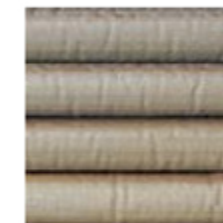
N-Profile: 15mm

WHITE MUSHROOM



Beta: 15mm

KUBU



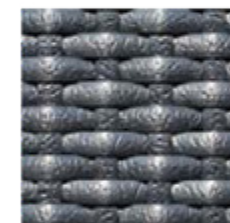
N-Profile: 15mm

KUBU MUSHROOM



Flat-Flat: 7mm

SHIMMER VIOLA



Polypeel: 6mm

BLACK LEATHER



Polyrod: 3mm  
Flat-Flat: 7mm  
15mm  
25mm

METALLIC WASH



Polypeel: 6mm

RED PULUT



N-Profile: 15mm

BLACK MUSHROOM



Shades for Coast and Tanit Daybeds and upholstery for North.



BATYLINE NATURAL 5112

## BRAFTA



BRAFTA  
22921 LOVESEAT LEFT END  
75 x 37 x 28 inches.



BRAFTA  
22922 LOVESEAT RIGHT END  
75 x 37 x 28 inches.



BRAFTA  
22923 CORNER PART  
37 x 37 x 28 inches.



BRAFTA  
22931 LOUNGE CHAIR  
30 x 37 x 28 inches.



BRAFTA  
22924 RECTANGULAR COFFEE TABLE  
47 x 24 x 17 inches.



BRAFTA  
22925 SIDE TABLE  
20 x 20 x 22 inches.

## MADISSON



MADISON  
22143 SOFA  
75 x 34 x 32 inches.



MADISON  
22142 LOVESEAT  
52 x 34 x 32 inches.



MADISON  
22141 LOUNGE CHAIR  
29 x 34 x 32 inches.



MADISON  
22144 COFFEE TABLE  
48 x 24 x 16 inches.



MADISON  
22145 SIDE TABLE  
20 x 20 x 21 inches.



MADISON  
22444 DINING ARMCHAIR  
25 x 26 x 36 inches.



MADISON  
22403 DINING CHAIR  
20 x 26 x 36 inches.



MADISON  
22700 LOUNGER  
30 x 79 x 12 inches.



MADISON  
22400 RECT. DINING TABLE  
79 x 39 x 29 inches.



MADISON  
22401 SQUARE DINING TABLE  
39 x 39 x 29 inches.



MADISON  
22721 STACKABLE BARSTOOL  
19 x 22 x 44 inches.



MADISON  
22722 STACKABLE BARSTOOL WITH ARMS  
24 x 22 x 44 inches.

## PACIFIC



PACIFIC  
2127 CURVED CORNER  
66 x 66 x 31 inches.



PACIFIC  
2132 CENTER  
30 x 36 x 31 inches.



PACIFIC  
2133 CORNER  
36 x 36 x 31 inches.



PACIFIC  
2131L/R LEFT OR RIGHT END  
36 x 36 x 31 inches.



PACIFIC  
2130 LOUNGE CHAIR  
37 x 36 x 31 inches.



PACIFIC  
2128 CHAISE RIGHT  
79 x 47 x 31 inches.



PACIFIC  
2129 CHAISE LEFT  
79 x 47 x 31 inches.



PACIFIC  
2370 DINING ARMCHAIR  
26 x 26 x 30 inches.



PACIFIC  
2134 SMALL COFFEE TABLE  
30 x 30 x 12 inches.  
2135 LARGE COFFEE TABLE  
37 x 37 x 12 inches.



PACIFIC  
2136 SMALL OTTOMAN  
30 x 30 x 12 inches.  
2137 LARGE OTTOMAN  
37 x 37 x 12 inches.



PACIFIC  
2139 RACK  
24 x 24 x 48 inches.



PACIFIC  
2374 LARGE SQUARE DINING TABLE  
71 x 71 x 29 inches.



PACIFIC  
2373 SQUARE DINING TABLE  
39 x 39 x 29 inches.



PACIFIC  
2372 RECT. DINING TABLE  
87 x 39 x 29 inches.  
2375 RECT. DINING TABLE  
110 x 39 x 29 inches.

## MARQUIS



MARQUIS  
2301 DINING ARMCHAIR  
22 x 23 x 34 inches.



MARQUIS  
2303 ROUND BISTRO TABLE  
30 Ø x 29 inches.

## RIA



RIA  
2423 DINING CHAIR  
19 x 22 x 37 inches.

## STRIPS



STRIPS  
22913 SOFA  
89 x 36 x 32 inches.



STRIPS  
22911 LOUNGE CHAIR  
44 x 36 x 32 inches.



STRIPS  
22914 COFFEE TABLE  
41 Ø x 12 inches.



STRIPS  
22915 SIDE TABLE  
20 Ø x 22 inches.

## NEVADA



NEVADA  
2382 DINING ARMCHAIR  
23 x 25 x 36 inches.



NEVADA  
2381 DINING CHAIR  
20 x 25 x 36 inches.



NEVADA  
2386 RECT. DINING TABLE  
79 x 39 x 29 inches.



NEVADA  
2387 SQUARE DINING TABLE  
39 x 39 x 29 inches.

## NORTH



NORTH  
22318 SOFA RIGHT END  
92 x 37 x 30 inches.



NORTH  
22317 LOVESEAT LEFT END  
64 x 37 x 30 inches.



NORTH  
22319 CORNER  
37 x 37 x 30 inches.



NORTH  
22311 LOUNGE CHAIR  
36 x 38 x 30 inches.



NORTH  
22316 OTTOMAN  
24 x 24 x 13 inches.



NORTH  
22314 COFFEE TABLE  
49 x 24 x 16 inches.



NORTH  
22315 SIDE TABLE  
20 x 20 x 21 inches.

## PLANK



PLANK  
22694 DINING ARMCHAIR  
22 x 24 x 32 inches.



PLANK  
22690 OVAL DINING TABLE  
81 x 55 x 29 inches.



PLANK  
22691 ROUND DINING TABLE  
47 Ø x 29 inches.

## TOPAZ



TOPAZ  
2283 SOFA  
95 x 36 x 26 inches.



TOPAZ  
2281 LOUNGE CHAIR  
42 x 36 x 26 inches.



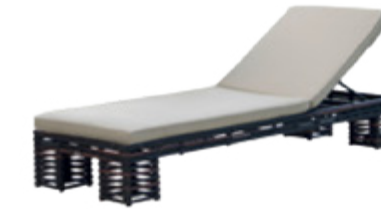
TOPAZ  
1940 CORNER  
38 x 39 x 26 inches.



TOPAZ  
1941 CENTER  
30 x 39 x 26 inches.



TOPAZ  
1940 LEFT OR RIGHT END  
38 x 39 x 26 inches.



TOPAZ  
29860 LOUNGER  
28 x 79 x 11 inches.



TOPAZ  
1943 MODULAR COFFEE TABLE  
30 x 30 x 11 inches.



TOPAZ  
2284 COFFEE TABLE  
47 x 26 x 16 inches.



TOPAZ  
2285 SIDE TABLE  
22 x 22 x 22 inches.

## CHAISE LOUNGES



IMPERIAL  
22852 LOUNGER  
30 x 79 x 21 inches.



MIHA  
2946 LOUNGER  
30 x 79 x 10 inches.



SUN  
2932 SINGLE LOUNGER  
30 x 79 x 11 inches.



## EURO



EURO  
22713 BAR  
51 x 18 x 42 inches.



EURO  
22709 STACKABLE BARSTOOL  
17 x 21 x 43 inches.

## OMEGA



OMEGA  
2942 BAR  
48 x 18 x 42 inches.



OMEGA  
2943 BACKLESS BARSTOOL  
15 x 15 x 29 inches.

## DAYBEDS



SHADE  
2973 DAYBED  
99 x 85 x 76 inches.



ANIBAL  
22880 DAYBED  
79 x 79 x 10 inches. 85 x 79 x 87 inches.



COAST  
22891 DAYBED  
79 x 78 x 80 inches. OPEN  
79 x 45 x 80 inches. CLOSED



TANIT  
84806 DAYBED  
88 x 88 x 102 inches.

# PAVILION GLOBAL Warranty

THIS IS A LIMITED WARRANTY

### WHAT IS COVERED

Pavilion Global™ warrants its products against faulty workmanship and/or manufacturing defects for a two year period to the original purchaser. Proof of purchase is required showing customers original sales order with name of original purchaser, date with product model numbers and descriptions.

Pavilion Global™ will, at its discretion repair or replace any item that has structurally failed during normal use and that has received regular care and maintenance. This is a limited warranty.

To maintain furniture, wash with a mild natural soap and warm water solution. Prepare a solution of 1/4 cup of mild soap per gallon of water. Use a soft sponge or cleaning rag to clean aluminum frames. Rinse with clean water. It is recommended that furniture inland away from salt air environments be cleaned quarterly or as needed. For furniture in coastal areas, salt spray must be cleaned from frames on a regular basis (Bi-monthly) or finish may oxidize, discolor and/or blister. (Salt spray build up over time without proper cleaning will deteriorate the frame's finish.) Finish failure due to improper cleaning will void Pavilion Global's warranty. CAUTION!!! When using floor cleaning chemicals such as chlorine or muriatic acid, furniture MUST be removed from area. Floors MUST be thoroughly rinsed with clean water prior to replacing furniture. Residue from cleaning chemicals may deteriorate the frame's finish and void warranty.

Cushions, fabrics, synthetic weaving and slings are warranted for one year. The fabric manufacturer may offer an additional warranty. Read carefully the "Care and Maintenance" page and see the helpful cleaning chart for stains on our website. [www.pavilion-furniture.com](http://www.pavilion-furniture.com)

### WHAT IS NOT COVERED

The following is NOT covered under our warranty.

- Failure of furniture frames or welds arising from unreasonable, abusive or improper use is not covered by this warranty.
- Failure of furniture or parts caused by neglect of reasonable and necessary care and maintenance.
- Normal fading, discoloration, tears or cuts in synthetic weaves or scratching resulting from normal wear.
- Stretching of fabric or upholstery materials resulting from normal wear.
- Stains due to contact with tanning lotions or other chemicals including but not limited to cleaning solutions and/or pool chemicals. See care and maintenance and chart on our website.
- Acts of nature, including fire, wind, flood and freeze damage.
- Non-proprietary items such as glass, other table top surfaces or umbrellas. These items may be warranted by their manufacturers.
- Freight damage. All sales are made FOB factory. Title to the merchandise passes to the freight carrier and to the purchaser at time of shipment.
- Return freight for product warranty or repair after one year from date of purchase.
- Cost of field repairs NOT authorized in writing by Pavilion Furniture, Inc.

For additional information or service, please contact your local Pavilion Global™ representative or call our customer service department at 800. 325.3260 or email us at: [customerservice@pavilionfurniture.com](mailto:customerservice@pavilionfurniture.com)

# PAVILION GLOBAL

## CARE AND MAINTENANCE INSTRUCTIONS

Pavilion Global's™ furniture and its appearance can be enjoyed for years with proper care and maintenance. Please read the following Care & Cleaning Instructions carefully and instruct those persons responsible for the care and maintenance of your furniture investment to follow these care procedures. Failure to maintain proper care & maintenance of your furniture may void the Pavilion Global™ warranty.

### CUSHIONS

Sunbrella® (solution dyed acrylic fabric) recommends their fabrics be cleaned; Spot wash by sponging briskly with a solution of natural soap in lukewarm water. Rinse thoroughly with clean water to remove soap and then air dry. For stubborn stains or suntan lotion, use fabric spot remover following the directions on the container. Rinse thoroughly with clean water and air dry. Solution-dyed acrylic does not promote mildew growth. However, mildew may grow on dirt and other foreign substances that are not removed from the fabric. To clean mildew stains, prepare a mild solution of one cup bleach and two capfuls of natural soap per gallon of water. Spray the entire area and allow to soak in.

If necessary, scrub vigorously with a sponge or clean rag. Sponge thoroughly with clean water and air dry. See helpful cleaning chart for stains on our website; [www.pavilion-furniture.com](http://www.pavilion-furniture.com). Click on heading Care & Maintenance, under Cushions click on "Acrylic cleaning chart".

### SLING FABRIC

The following cleaning instructions are from the American Casual Furniture Association. "Vacuum or brush to remove dust or dirt. Prepare cleaning solution using 1 tbsp. liquid dish soap detergent and 2 tbsp. household bleach mixed in a gallon of water. Clean fabric using a sponge or soft cloth dipped in the solution. Rinse with clean water, and air dry."

### SYNTHETIC WEAVE, VINYL STRAPS AND FIBERGLASS TOPS

For average cleaning, prepare a solution of 1/4 cup of mild soap per gallon of warm water. Use a soft sponge or cleaning rag to clean vinyl straps, synthetic weave or fiberglass tops. Rinse thoroughly with clean water.

### FRAME FINISHES

Wash with a mild natural soap and warm water solution. Prepare a solution of 1/4 cup of mild soap per gallon of water. Use a soft sponge or cleaning rag to clean aluminum frames. Rinse with clean water. It is recommended that furniture inland away from salt air environments be cleaned quarterly or as needed. Furniture near coastal areas, salt spray must be cleaned from frames on a regular basis (Bi-monthly) or finish may oxidize, discolor and/or blister. (Salt spray build up over time without proper cleaning will deteriorate the frame's finish.) This is not covered under warranty. Caution! When using floor cleaning chemicals such as chlorine or muriatic acid, furniture MUST be removed from area. Floors MUST be thoroughly rinsed with clean water prior to replacing furniture. Residue from cleaning chemicals may deteriorate the frame's finish and is not covered under warranty. In freezing conditions, store frames in upright position to prevent water build up in frames and allow water to drain. Water that has accumulated in frame in a freezing environment may cause water to freeze and explode/crack metal frame structure. This will void warranty.

### MOVING PARTS

It is the responsibility of the furniture owner to periodically check all nuts and bolts to see that they are properly tightened at all times and lubricate mechanical parts. This will insure that all fastened areas are secure. Failure to inspect and maintain these areas may result in disassembly or breakage of part and void warranty.

Take time to care and maintain your furniture investment. Proper care in return will offer years of enjoyable use.

Pavilion Global™ 2015

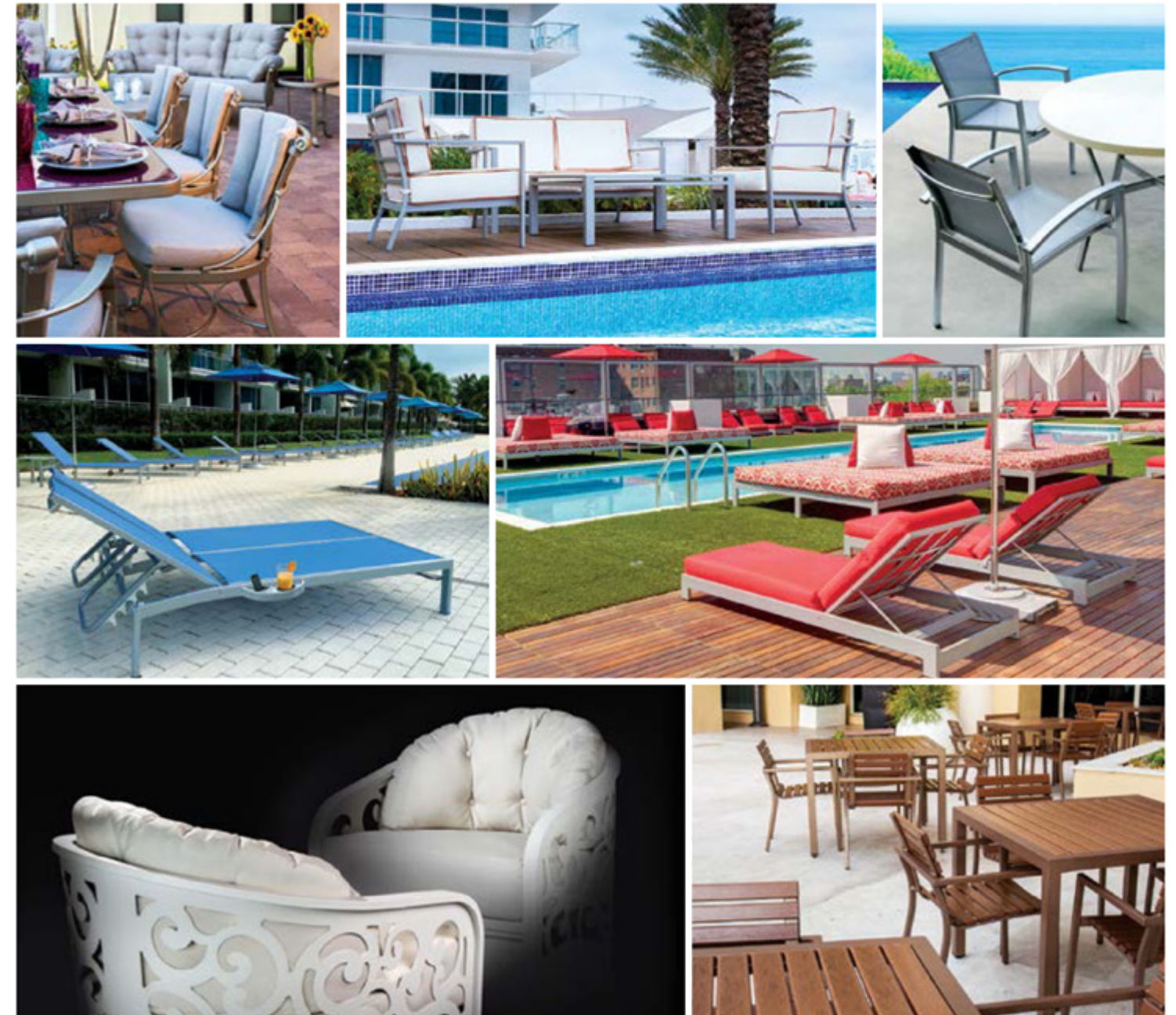
PAVILION  
Global™

is a division of Pavilion Furniture

PAVILION®  
EXCEPTIONAL INTERIOR & EXTERIOR FURNITURE

Pavilion Furniture is manufactured in Miami, FL USA. Specified by leading designers for hotels, resorts, country clubs, cruise lines, restaurants and fine residences worldwide.

To see the latest in indoor/outdoor furniture visit [www.pavilion-furniture.com](http://www.pavilion-furniture.com).





a division of  
**PAVILION FURNITURE, INC.**

16200 NW 49th Avenue, Miami, FL 33018  
Phone: 305.823.3480 [www.pavilion-furniture.com](http://www.pavilion-furniture.com)